



**NEWGATE**  
CAPITAL MANAGEMENT LLC

## **Newgate Global Resources Fund**

**Class A Shares (NGGLX)  
Class I Shares (NGIRX)**

**Prospectus**

**March 30, 2010**

**The Securities and Exchange Commission (“SEC”) has not approved or disapproved of these securities or determined if this Prospectus is truthful or complete. Any representation to the contrary is a criminal offense.**

**Newgate Global Resources Fund**  
a series of Trust for Professional Managers (the “Trust”)

**TABLE OF CONTENTS**

<b>SUMMARY SECTION.....</b>	<b>1</b>
<b>INVESTMENT STRATEGIES, RELATED RISKS AND DISCLOSURE OF PORTFOLIO HOLDINGS.....</b>	<b>7</b>
INVESTMENT OBJECTIVES .....	7
PRINCIPAL INVESTMENT STRATEGIES .....	7
GENERAL INVESTMENT POLICIES OF THE FUND .....	7
PRINCIPAL RISKS OF INVESTING IN THE FUND .....	8
PORTFOLIO HOLDINGS INFORMATION .....	11
<b>MANAGEMENT OF THE FUND.....</b>	<b>11</b>
THE ADVISER.....	11
PORTFOLIO MANAGERS.....	12
<b>SHAREHOLDER INFORMATION .....</b>	<b>13</b>
CHOOSING A SHARE CLASS .....	13
CLASS A SALES CHARGE REDUCTIONS AND WAIVERS .....	14
SHARE PRICE.....	15
HOW TO PURCHASE SHARES .....	16
HOW TO REDEEM SHARES .....	19
TOOLS TO COMBAT FREQUENT TRANSACTIONS .....	22
OTHER FUND POLICIES.....	23
DISTRIBUTION (12B-1) AND SHAREHOLDER SERVICING FEES .....	23
<b>DISTRIBUTIONS AND TAXES .....</b>	<b>24</b>
DISTRIBUTIONS .....	24
TAX CONSEQUENCES .....	24
<b>FINANCIAL HIGHLIGHTS .....</b>	<b>26</b>

## Summary Section

**Investment Objectives.** The investment objectives of the Newgate Global Resources Fund (the “Fund”) are long-term growth of capital plus protection against inflation and declining U.S. dollar by investing in high-quality companies involved in the production, extraction, processing, distribution and transportation of natural resources of any kind.

**Fees and Expenses of the Fund.** This table describes the fees and expenses that you may pay if you buy and hold shares of the Fund. You may qualify for sales charge discounts on Class A shares if you or your family invest, or agree to invest in the future, at least \$25,000 in the Fund. More information about these and other discounts is available from your financial professional and under “Shareholder Information – Class A Sales Charge Reductions and Waivers” beginning on page 13 of this Prospectus and under “Purchase and Redemption of Fund Shares – Sales Charge on Class A Shares” beginning on page 34 of the Fund’s SAI.

Share Class	Class A	Class I
<b>Shareholder Fees</b>		
<i>(fees paid directly from your investment)</i>		
Maximum sales charge (load) imposed on purchases (as a percentage of the offering price)	5.25%	None
Maximum deferred sales charge (load) (as a percentage of the offering price)	None	None
Maximum level sales charge (load) (as a percentage of the offering price)	0.50%	None
<b>Annual Fund Operating Expenses</b>		
<i>(expenses that you pay each year as a percentage of the value of your investment)</i>		
Management Fees	0.80%	0.80%
Distribution (12b-1) and Shareholder Servicing Fees	0.35%	None
Other Expenses	59.27%	78.22%
Acquired Fund Fees and Expenses <sup>(1)</sup>	0.02%	0.02%
Total Annual Fund Operating Expenses	60.44%	79.04%
Fee Waiver/Expense Reimbursement	-58.67%	-77.62%
Total Annual Fund Operating Expenses after Fee Waiver/Expense Reimbursement <sup>(2)</sup>	1.77%	1.42%

<sup>(1)</sup> Please note that the Total Annual Fund Operating Expenses in the table above do not correlate to the Ratio of Expenses to Average Net Assets found within the “Financial Highlights” section of this prospectus, which do not include Acquired Fund Fees and Expenses.

<sup>(2)</sup> Pursuant to an operating expense limitation agreement between Newgate Capital Management LLC, the Fund’s investment adviser (the “Adviser”) and the Fund, the Adviser has agreed to waive its management fees and/or reimburse expenses of the Fund to ensure that Total Annual Fund Operating Expenses (exclusive of Acquired Fund Fees and Expenses) do not exceed 1.75% and 1.40% of the Fund’s average annual net assets, for Class A shares and Class I shares, respectively, through March 31, 2011, subject thereafter to annual re-approval of the agreement by the Trust’s Board of Trustees (the “Board of Trustees”). This operating expense limitation agreement can be terminated only by, or with the consent of, the Board of Trustees. The Adviser is permitted to seek reimbursement from the Fund, subject to limitations, for management fees it waived and Fund expenses it paid.

**Example.** This Example is intended to help you compare the costs of investing in the Fund with the cost of investing in other mutual funds. The Example assumes that you invest \$10,000 in the Fund for the time periods indicated and then redeem all of your shares at the end of those periods. The Example also assumes that your investment has a 5% return each year and that the Fund’s operating expenses remain the same. Although your actual costs may be higher or lower, based on these assumptions, your costs would be:

### Class A

<u>One Year</u>	<u>Three Years</u>	<u>Five Years</u>	<u>Ten Years</u>
\$180	\$557	\$959	\$2,084

### Class I

<u>One Year</u>	<u>Three Years</u>	<u>Five Years</u>	<u>Ten Years</u>
\$145	\$449	\$776	\$1,702

**Portfolio Turnover.** The Fund pays transaction costs, such as commissions, when it buys and sells securities (or “turns over” its portfolio). A higher portfolio turnover rate may indicate higher transaction costs and may result in higher taxes when Fund shares are held in a taxable account. These costs, which are not reflected in Total Annual Fund Operating Expenses or in the Example, affect the Fund’s performance. During the most recent fiscal year, the Fund’s portfolio turnover rate was 129.50% of the average value of its portfolio.

**Principal Investment Strategies.** Under normal market circumstances, the Fund will invest at least 80% of its net assets (plus the amount of any borrowing for investment purposes) in companies involved in the production, extraction, processing, distribution and transportation of natural resources of any kind. These companies may include, for example, companies involved, either directly or through subsidiaries, in exploring, mining, drilling, refining, processing, transporting, distributing, fabricating, dealing in or owning natural resources. The Fund will also invest in companies that provide services directly related to this activity for the above listed companies. Natural resources include, but are not limited to, precious metals (e.g., gold, platinum and silver), ferrous and nonferrous metals (e.g., iron, aluminum and copper), strategic metals (e.g., uranium and titanium), hydrocarbons (e.g., coal, oil and natural gas), chemicals, paper and forest products, food, textile and tobacco products, and other basic commodities. In addition, the Fund may invest in domestic and foreign securities, including depositary receipts and securities of companies located in emerging markets, and may invest in companies of any size. The Fund will invest primarily in securities of at least three different countries, including the United States.

The Fund invests in equity securities, including common stocks and convertible securities. The Fund may invest up to 15% of its net assets in derivative instruments, including options, futures contracts and options on futures contracts, synthetic instruments and currency swaps. In addition to investments in equity securities, the Fund may invest up to 35% of its net assets in other investment companies, including exchange-traded funds (“ETFs”). The Fund may invest in securities that are not publicly traded, but that are eligible for purchase and sale by certain qualified institutional buyers pursuant to Rule 144A under the Securities Act of 1933, as amended (the “Securities Act”), as well as other restricted securities, and up to 15% of its net assets in illiquid securities. The Fund may also invest up to 20% of its net assets in U.S. Government obligations.

The Adviser’s investment process begins with a top-down, global economic assessment to identify undervalued sectors. The Adviser uses fundamental analysis, investment experience and professional judgment to evaluate the impact of current geopolitical and macroeconomic factors on the natural resource market and companies involved in the natural resource industry worldwide. The Adviser uses a bottom-up quantitative and fundamental analytic approach for security selection. The Adviser’s rigorous, bottom-up approach focuses on a combination of relative valuation analysis and strategic business evaluation. In addition to attractive price levels, the Adviser focuses on large and medium capitalization companies with dominant market share, a high degree of financial transparency and good corporate governance.

**Principal Risks.** Remember that in addition to possibly not achieving your investment goals, **you could lose money by investing in the Fund.** The principal risks of investing in the Fund are:

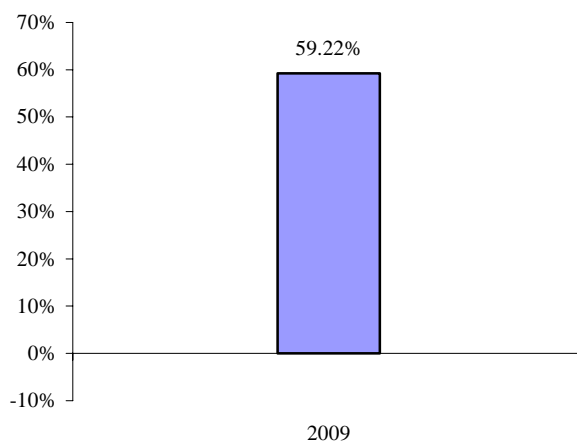
- *Management Risk.* Risk that the Adviser's investment strategies for the Fund may not result in an increase in the value of your investment or in overall performance equal to other investments.
- *General Market Risk.* Risk that the value of the Fund's shares will fluctuate based on the performance of the Fund's investments and other factors affecting the securities markets generally.
- *Foreign Securities Risk.* The risk of investments in foreign companies involve certain risks not generally associated with investments in the securities of U.S. companies, including changes in currency exchange rates, unstable political, social and economic conditions, a lack of adequate or accurate company information, differences in the way securities markets operate, less secure international banks or securities depositories than those in the U.S. and foreign controls on investment. In addition, individual international country economies may differ favorably or unfavorably from the U.S. economy in such respects as growth of gross domestic product, rates of inflation, capital reinvestment, resources, self-sufficiency and balance of payments position.
- *Emerging Markets Risk.* The risk of investing in securities of companies located in developing or emerging markets may be heightened because countries in these markets are generally more volatile and can have relatively unstable governments, social and legal systems that do not protect shareholders, economies based on only a few industries, and securities markets that trade a small number of issues.
- *Natural Resources Industry Concentration Risk.* Because the Fund's investments are concentrated in the natural resources industry, the value of its investments will be affected by factors related to that industry and may fluctuate more widely than that of a fund that invests in a broad range of industries.
- *Equity Market Risk.* Common stocks are susceptible to general stock market fluctuations and to volatile increases and decreases in value as market confidence in and perceptions of their issuers change. Preferred stock is subject to the risk that the dividend on the stock may be changed or omitted by the issuer, and that participation in the growth of an issuer may be limited.
- *Convertible Securities Risk.* A convertible security is a fixed-income security (a debt instrument or a preferred stock) which may be converted at a stated price within a specified period of time into a certain quantity of the common stock of the same or a different issuer. The market value of a convertible security performs like that of a regular debt security, that is, if market interest rates rise, the value of the convertible security falls.
- *Large-Cap Company Risk.* Larger, more established companies may be unable to respond quickly to new competitive challenges such as changes in consumer tastes or innovative smaller competitors. Also, large-cap companies are sometimes unable to attain the high growth rates of successful, smaller companies, especially during extended periods of economic expansion.
- *Mid-Cap, Small-Cap and Micro-Cap Company Risk.* The risk that the securities of mid-cap, small-cap and micro-cap companies may be more volatile and less liquid than the securities of large-cap companies.
- *Shares of Other Investment Companies Risk.* The risk that you will indirectly bear fees and expenses charged by the underlying funds in addition to the Fund's direct fees and expenses and, as a result, your cost of investing in the Fund will generally be higher than the cost of investing directly in the underlying fund shares.
- *Exchange-Traded Funds Risk.* The risk related to investing in ETFs that do not apply to investments in conventional mutual funds, including that the market price of the ETF's shares may trade at a discount to their net asset value or that an active trading market for an ETF's shares may not develop or be maintained.
- *U.S. Government Obligations Risk.* The risk that there can be no assurance that the U.S. Government would provide financial support to its agencies or instrumentalities (including

government-sponsored enterprises) who issue or guarantee certain securities where it is not obligated to do so.

- *Derivative Securities Risk.* The risk that the Fund's use of derivatives will cause losses due to the unexpected effect of market movements on a derivative's price, or because the derivatives do not perform as anticipated, or are not correlated with the performance of other investments which they are used to hedge or if the Fund is unable to liquidate a position because of an illiquid secondary market.
- *Swap Agreement Risk.* The risk that a swap contract may not be assigned without the consent of the counter-party, and may result in losses in the event of a default or bankruptcy of the counter-party.
- *Synthetic Instruments Risk.* The risk of investments in synthetic instruments is that the fluctuations in their values may not correlate perfectly with the overall securities markets.
- *Restricted Securities Risk.* The risk that because there is a limited market for restricted securities, the Fund may find it difficult to sell the securities and to the extent the securities are sold in privately negotiated transactions, the Fund may have to sell them at a lower price than if they were sold publicly.

**Performance.** The bar chart and the Average Annual Total Returns table provide some indication of the risks of investing in the Fund by showing how the Fund's average annual returns compare with those of a broad measure of market performance. Remember, the Fund's past performance, before and after taxes, is not necessarily an indication of how the Fund will perform in the future. Updated performance information is available on the Fund's website at [www.newgatefunds.com](http://www.newgatefunds.com) or by calling the Fund toll-free at 888-9-Newgate (888-963-9428).

**Class I Shares<sup>1</sup>**  
**Calendar Year Returns as of December 31**



The Fund's calendar year-to-date return as of February 28, 2010 was -2.76%. During the period shown in the bar chart, the best performance for a quarter was 19.47% (for the quarter ended September 30, 2009). The worst performance was 3.10% (for the quarter ended March 31, 2009).

<sup>1</sup>The returns shown in the bar chart are for Class I shares. The performance of Class A shares will differ due to differences in expenses.

## Average Annual Total Returns

	Period Ended	
	December 31, 2009	
	<u>One Year</u>	<u>Since Inception</u> <u>(12/31/2008)</u>
<b>Class I Shares</b>		
Return Before Taxes	59.22%	59.22%
Return After Taxes on Distributions	57.51%	57.51%
Return After Taxes on Distributions and Sale of Fund Shares	38.71%	38.71%
<b>Class A Shares</b>		
Return Before Taxes	50.31%	50.31%
<b>Dow Jones UBS Commodity Index (reflects no deduction for fees, expenses or taxes)</b>	18.91%	18.91%

After-tax returns are shown for Class I shares only and will vary for Class A shares. After-tax returns are calculated using the historically highest individual federal marginal income tax rates and do not reflect the impact of state and local taxes. Actual after-tax returns depend on an investor's tax situation and may differ from those shown, and after-tax returns are not relevant to investors who hold their Fund shares through tax-deferred arrangements such as 401(k) plans or individual retirement accounts.

**Investment Adviser.** Newgate Capital Management LLC is the Fund's investment adviser.

**Portfolio Managers.** The following individuals have served as the Fund's portfolio managers since 2008:

<b>Portfolio Manager</b>	<b>Primary Title</b>
Avy E. Hirshman	Managing Director and Chief Investment Officer of the Adviser
James A. Trainor	Managing Director and Senior Portfolio Manager of the Adviser
Sonia G. Rosenbaum, Ph.D.	Managing Director and Director of Research of the Adviser
Matthew E. Peterson	Principal and Portfolio Manager of the Adviser
David K. Lee	Portfolio Manager and Investment Director of the Adviser
Maria Eugenia Tinedo	Principal, Portfolio Manager and Senior Research Analyst of the Adviser

**Purchase and Sale of Fund Shares.** You may conduct transactions by mail (Newgate Global Resources Fund, c/o U.S. Bancorp Fund Services, LLC, P.O. Box 701, Milwaukee, WI 53201-0701 (for regular mail) or 615 East Michigan Street, 3rd Floor, Milwaukee, WI 53202 (for overnight or express mail)), or by telephone at 888-9-NEWGATE (888-963-9428). Investors who wish to purchase or redeem Fund shares through a financial intermediary should contact the financial intermediary directly. The minimum initial investment for Class A shares is \$5,000 for non-IRA accounts and \$500 for IRA and other tax-deferred accounts. The minimum initial investment for all types of Class I shares is \$100,000. The minimum subsequent investment for Class A and Class I shares is \$1,000 for non-IRA accounts and \$100 for IRA and other tax-deferred accounts.

**Tax Information.** The Fund's distributions are taxable, and will be taxed as ordinary income or capital gains, unless you are investing through a tax-deferred arrangement, such as a 401(k) plan or an individual retirement account.

**Payments to Broker-Dealers and Other Financial Intermediaries.** If you purchase Fund shares through a broker-dealer or other financial intermediary (such as a bank), the Fund and its related

companies may pay the intermediary for the sale of Fund shares and related services. These payments may create conflicts of interest by influencing the broker-dealer or other intermediary and your salesperson to recommend the Fund over another investment. Ask your salesperson or visit your financial intermediary's website for more information.

## **Investment Strategies, Related Risks and Disclosure of Portfolio Holdings**

### **Investment Objectives**

The Fund's investment objectives are long-term growth of capital plus protection against inflation and declining U.S. dollar by investing in high-quality companies involved in the production, extraction, processing, distribution and transportation of natural resources of any kind. The Fund will also invest in companies whose businesses are integral to the operation and expansion of natural resource production.

### **Principal Investment Strategies**

Under normal market circumstances, the Fund will invest at least 80% of its net assets (plus the amount of any borrowing for investment purposes) in companies involved in the production, extraction, processing, distribution and transportation of natural resources of any kind. These companies may include, for example, companies involved, either directly or through subsidiaries, in exploring, mining, drilling, refining, processing, transporting, distributing, fabricating, dealing in or owning natural resources. The Fund will also invest in companies that provide services directly related to this activity for the above listed companies. Natural resources include, but are not limited to, precious metals (e.g., gold, platinum and silver), ferrous and nonferrous metals (e.g., iron, aluminum and copper), strategic metals (e.g., uranium and titanium), hydrocarbons (e.g., coal, oil and natural gas), chemicals, paper and forest products, food, textile and tobacco products, and other basic commodities. The Fund may invest in domestic and foreign securities, including depositary receipts and securities of companies located in emerging markets, and may invest in companies of any size. The Fund will invest primarily in securities of at least three different countries, including the United States.

The Fund invests in equity securities. An equity security (such as a stock, partnership interest or other beneficial interest in an issuer) represents a proportionate share of the ownership of a company. The Fund's investments in equity securities may include common stocks and convertible securities. The Fund may invest up to 15% of its net assets in derivative instruments, including options, futures contracts and options on futures contracts, synthetic instruments and currency swaps. The Fund's investments in foreign securities may also include depositary receipts, including ADRs, EDRs, and GDRs, which are securities representing securities of foreign issuers.

In addition to investments in equity securities, the Fund may invest up to 35% of its net assets in other investment companies, including ETFs. The Fund may invest in securities that are not publicly traded, but that are eligible for purchase and sale by certain qualified institutional buyers pursuant to Rule 144A under the Securities Act, as well as other restricted securities, and up to 15% of its net assets in illiquid securities. The Fund may also invest up to 20% of its net assets in U.S. Government obligations.

The Adviser's investment process begins with a top-down, global economic assessment to identify undervalued sectors. The Adviser uses fundamental analysis, investment experience and professional judgment to evaluate the impact of current geopolitical and macroeconomic factors on the natural resource market and companies involved in the natural resource industry worldwide. The Adviser uses a bottom-up quantitative and fundamental analytic approach for security selection. The Adviser's rigorous, bottom-up approach focuses on a combination of relative valuation analysis and strategic business evaluation. In addition to attractive price levels, the Adviser focuses on large and medium capitalization companies with dominant market share, a high degree of financial transparency and good corporate governance.

### **General Investment Policies of the Fund**

*Temporary or Cash Investments.* Under normal market conditions, the Fund will stay fully invested according to its principal investment strategies as described above. The Fund, however, may

temporarily depart from its principal investment strategies by making short-term investments in cash, cash equivalents, and high-quality, short-term debt securities and money market instruments for temporary defensive purposes in response to adverse market, economic or political conditions. This may result in the Fund not achieving its investment objectives during that period.

For longer periods of time, the Fund may hold a substantial cash or cash equivalent position. If the market advances during periods when the Fund is holding a large cash/cash equivalent position, the Fund may not participate to the extent it would have if the Fund had been more fully invested. To the extent that the Fund uses a money market fund for its cash position, there will be some duplication of expenses because the Fund would bear its pro rata portion of such money market fund's advisory fees and operational expenses.

*Changes in Investment Objectives, Strategies and Policies.* The investment objectives, strategies and policies described above may be changed without the approval of the Fund's shareholders upon 30 days' written notice to shareholders. However, the Fund will not change its investment policy of investing at least 80% of its net assets in companies involved in the production, extraction, processing, distribution and transportation of natural resources of any kind without providing shareholders with at least 60 days' prior written notice.

## **Principal Risks of Investing in the Fund**

The Fund cannot assure investors that it will achieve its investment objectives. An investment in the Fund should be considered a long-term investment. The Fund is not intended to meet investors' short-term financial needs or to provide a complete or balanced investment program. Before investing in the Fund, you should carefully consider your own investment goals, the amount of time you are willing to leave your money invested and the amount of risk you are willing to take. **In addition to possibly not achieving your investment goals, you could lose money by investing in the Fund.** The principal risks of investing in the Fund are:

*Management Risk.* The ability of the Fund to meet its investment objectives is directly related to the Adviser's implementation of the investment strategies for the Fund. The value of your investment in the Fund may vary with the effectiveness of the Adviser's research, analysis and asset allocation among portfolio securities. If the Adviser's implementation of the investment strategies does not produce the expected results, your investment could be diminished or even lost.

*General Market Risk.* The market value of a security may move up or down, sometimes rapidly and unpredictably. These fluctuations may cause a security to be worth less than the price originally paid for it, or less than it was worth at an earlier time. Market risk may affect a single issuer, industry, or sector of the economy or the market as a whole. U.S. and international markets have experienced significant volatility since 2008. The fixed income markets have experienced substantially lower valuations, reduced liquidity, price volatility, credit downgrades, increased likelihood of default and valuation difficulties. Concerns have spread to domestic and international equity markets. In some cases, the stock prices of individual companies have been negatively impacted even though there may be little or no apparent degradation in the financial conditions or prospects of that company. As a result of this significant volatility, many of the following risks associated with an investment in the Fund may be increased. The U.S. Government has taken steps to alleviate these market concerns. However, there is no assurance that such actions will be successful. Continuing market problems may have adverse effects on the Fund.

*Risks of Investing in Foreign Securities.* Investments in foreign securities involve certain inherent risks, including the following:

Political and Economic Factors. Individual foreign economies of certain countries may differ favorably or unfavorably from the U.S. economy in such respects as growth of gross national product, rate of inflation, capital reinvestment, resource self-sufficiency, diversification and balance of

payments position. The internal politics of certain foreign countries may not be as stable as those of the U.S. Government. Certain foreign countries also continue to participate to a significant degree, through ownership interest or regulation, in their respective economies. Action by these governments could include restrictions on foreign investment, nationalization, expropriation of goods or imposition of taxes, and could have a significant effect on market prices of securities and payment of interest. The economies of many foreign countries are heavily dependent upon international trade and are accordingly affected by the trade policies and economic conditions of their trading partners. Enactment by these trading partners of protectionist trade legislation could have a significant adverse effect upon the securities markets of such countries.

Currency Fluctuations. Securities in which the Fund invests may be denominated in foreign currencies. Accordingly, a change in the value of any such currency against the U.S. dollar will result in a corresponding change in the U.S. dollar value of the Fund's assets denominated in that currency. Such changes will also affect the Fund's income. The value of the Fund's assets may also be affected significantly by currency restrictions and exchange control regulations enacted from time to time.

Taxes. The interest and dividends payable on certain foreign portfolio securities may be subject to foreign withholding taxes, thus reducing the net amount of income available for distribution to shareholders, including the Fund.

Costs. To the extent that the Fund is invested in foreign securities, the Fund's expense ratio is likely to be higher than those of investment companies investing only in domestic securities, because the cost of maintaining the custody of foreign securities is higher.

Emerging Markets Risk. Securities of companies located in developing or emerging markets entail additional risks, including: less social, political and economic stability; smaller securities markets and lower trading volume, which may result in less liquidity and greater price volatility; national policies that may restrict the Fund's investment opportunities, including restrictions on investments in issuers or industries, or expropriation or confiscation of assets or property; and less developed legal structures governing private or foreign investment.

*Natural Resources Industry Concentration Risk.* Because the Fund's investments are concentrated in the natural resources industry, the value of its investments will be affected by factors related to that industry and may fluctuate more widely than that of a fund that invests in a broad range of industries. The natural resources industries can be significantly affected by events relating to international political and economic developments, energy conservation, the success of exploration projects, commodity prices, and tax and other government regulations.

*Equity Market Risk.* Common stocks are susceptible to general stock market fluctuations and to volatile increases and decreases in value as market confidence in and perceptions of their issuers change. These investor perceptions are based on various and unpredictable factors including: expectations regarding government, economic, monetary and fiscal policies; inflation and interest rates; economic expansion or contraction; and global or regional political, economic and banking crises. If you held common stock of any given issuer, you would generally be exposed to greater risk than if you held preferred stocks and debt obligations of the issuer because common stockholders generally have inferior rights to receive payments from issuers in comparison with the rights of preferred stockholders, bondholders and other creditors of such issuers.

*Convertible Securities Risk.* A convertible security is a fixed-income security (a debt instrument or a preferred stock) which may be converted at a stated price within a specified period of time into a certain quantity of the common stock of the same or a different issuer. Convertible securities are senior to common stock in an issuer's capital structure, but are usually subordinated to similar non-convertible securities. While providing a fixed-income stream (generally higher in yield than the income derivable from common stock but lower than that afforded by a similar non-convertible

security), a convertible security also gives an investor the opportunity, through its conversion feature, to participate in the capital appreciation of the issuing company depending upon a market price advance in the convertible security's underlying common stock.

*Large-Cap Company Risk.* Larger, more established companies may be unable to respond quickly to new competitive challenges such as changes in consumer tastes or innovative smaller competitors. Also, large-cap companies are sometimes unable to attain the high growth rates of successful, smaller companies, especially during extended periods of economic expansion.

*Mid-Cap Company Risk.* Generally, mid-cap companies may have more potential for growth than large-cap companies. Investing in mid-cap companies, however, may involve greater risk than investing in large-cap companies. Mid-cap companies may not have the management experience, financial resources, product diversification and competitive strengths of large-cap companies, and, therefore, their securities may be more volatile than the securities of larger, more established companies, making them less liquid than other securities. Mid-cap company stocks may also be bought and sold less often and in smaller amounts than larger company stocks. Because of this, if the Fund wants to sell a large quantity of a mid-cap company's stock, it may have to sell at a lower price than the Adviser might prefer, or it may have to sell in smaller than desired quantities over a period of time.

*Small- and Micro-Cap Company Risk.* Generally, small- and micro-cap, and less seasoned companies, have more potential for rapid growth. They also often involve greater risk than large- or mid-cap companies, and these risks are passed on to the Fund. These smaller-cap companies may not have the management experience, financial resources, product diversification and competitive strengths of large- or mid-cap companies, and, therefore, their securities tend to be more volatile than the securities of larger, more established companies, making them less liquid than other securities. Small- and micro-cap company stocks tend to be bought and sold less often and in smaller amounts than larger company stocks. Because of this, if the Fund wants to sell a large quantity of a smaller-cap company's stock, it may have to sell at a lower price than the Adviser might prefer, or it may have to sell in smaller than desired quantities over a period of time.

*ETFs and Other Investment Companies Risk.* The portfolios of ETFs generally consist of common stocks that closely track the performance and dividend yield of specific securities market indices, either broad market, sector or international. ETFs provide investors the opportunity to buy or sell throughout the trading day an entire portfolio of stocks in a single security. Although index mutual funds are similar, they generally are issued or redeemed only once per day, usually at the close of trading on the New York Stock Exchange (the "NYSE"). Under the Investment Company Act of 1940, as amended (the "1940 Act"), the Fund and any company controlled by the Fund may not purchase more than 3% of the outstanding securities of another investment company (including many ETFs). Accordingly, the Fund may not be able to achieve its desired levels of investments in ETFs or other investment companies. Investment in another investment company also usually involves payment of the other investment company's pro rata share of advisory fees or administrative and other fees and expenses charged by such investment company, in addition to those paid by the Fund.

*U.S. Government Obligations Risk.* U.S. Government obligations include securities issued or guaranteed as to principal and interest by the U.S. Government, its agencies or instrumentalities, such as the U.S. Treasury. Payment of principal and interest on U.S. Government obligations may be backed by the full faith and credit of the United States or may be backed solely by the issuing or guaranteeing agency or instrumentality itself. In the latter case, the investor must look principally to the agency or instrumentality issuing or guaranteeing the obligation for ultimate repayment, which agency or instrumentality may be privately owned. There can be no assurance that the U.S. Government would provide financial support to its agencies or instrumentalities (including government-sponsored enterprises) where it is not obligated to do so.

*Derivative Securities Risk.* The Fund may invest up to 15% of its net assets in derivative securities, including options on futures contracts and other financial instruments such as options on securities and stock index options. These are financial instruments that derive their performance from the performance of an underlying asset, index, interest rate or currency exchange rate. Derivatives can be volatile and involve various types and degrees of risks, depending upon the characteristics of a particular derivative. Derivatives may entail investment exposures that are greater than their cost would suggest, meaning that a small investment in a derivative could have a large potential impact on the performance of the Fund. The Fund could experience a loss if derivatives do not perform as anticipated, or are not correlated with the performance of other investments which they are used to hedge or if the Fund is unable to liquidate a position because of an illiquid secondary market. The market for many derivatives is, or suddenly can become, illiquid. Changes in liquidity may result in significant, rapid and unpredictable changes in the prices for derivatives.

*Swap Agreement and Synthetic Instruments Risk.* The Fund's investments in swap agreements may not be assigned without the consent of the counter-party, and may result in losses in the event of a default or bankruptcy of the counter-party. The principal risk of investments in synthetic instruments is that the fluctuations in their values may not correlate perfectly with the overall securities markets. Some synthetic instruments are more sensitive to interest rate changes and market price fluctuations than others. Also, synthetic instruments are subject to counter-party risk, which is the risk that the other party in the transaction will not fulfill its contractual obligation to complete the transaction with the Fund. If a swap or other synthetic instrument is not transferable without the consent of the counter-party, or is otherwise not able to be traded freely, the investment is considered "illiquid."

*Restricted Securities Risk.* The Fund may invest without limit in securities that are subject to restrictions on resale, such as Rule 144A securities. Rule 144A securities are securities that have been privately placed but are eligible for purchase and sale by certain qualified institutional buyers such as the Fund under Rule 144A under the Securities Act. Under the supervision of the Board of Trustees, the Fund will determine whether securities purchased under Rule 144A are illiquid. The Fund is restricted to investing no more than 15% of its total assets in securities that are illiquid; that is, not readily marketable. If it is determined that qualified institutional buyers are unwilling to purchase these securities, the percentage of the Fund's assets invested in illiquid securities would increase.

## **Portfolio Holdings Information**

A description of the Fund's policies and procedures with respect to the disclosure of the Fund's portfolio holdings is available in the Fund's Statement of Additional Information ("SAI"). Currently, disclosure of the Fund's holdings is required to be made quarterly within 60 days of the end of each fiscal quarter in the annual and semi-annual reports to Fund shareholders and in the Fund's quarterly holdings report on Form N-Q. These reports will be available free of charge by contacting the Newgate Global Resources Fund, c/o U.S. Bancorp Fund Services, LLC, P.O. Box 701, Milwaukee, WI 53201-0701, by calling 888-9-NEWGATE (888-963-9428), or by visiting the Fund's website at [www.newgatefunds.com](http://www.newgatefunds.com).

## **Management of the Fund**

---

### **The Adviser**

The Fund has entered into an Investment Advisory Agreement (the "Advisory Agreement") with the Adviser, Newgate Capital Management LLC, a Delaware limited liability company registered as an investment adviser with the SEC, under which the Adviser manages the Fund's investments subject to the supervision of the Board of Trustees. Founded in 1982, the Adviser provides investment management services to private, corporate and public funds, educational and charitable institutions and private clients. The Adviser is located at One Sound Shore Drive, Greenwich, Connecticut 06830. The Fund compensates the Adviser for its investment advisory services at the annual rate of 0.80% of its average daily net assets, payable on a monthly basis.

Subject to the general supervision of the Board of Trustees, the Adviser is responsible for managing the Fund in accordance with its investment objective and policies, making decisions with respect to, and also orders for, all purchases and sales of portfolio securities. The Adviser also maintains related records for the Fund.

*Fund Expenses.* The Fund is responsible for its own operating expenses. However, pursuant to an operating expense limitation agreement between the Adviser and the Fund, the Adviser has agreed to reduce its management fees and/or pay expenses of the Fund to ensure that the Total Annual Fund Operating Expenses (excluding, generally acquired fund fees and expenses, brokerage and commission expenses, interest and tax expenses and extraordinary and non-recurring expenses) do not exceed 1.75% and 1.40% of the Fund's average daily net assets for Class A shares and Class I shares, respectively. Any reduction in management fees or payment of expenses made by the Adviser with respect to the Fund may be reimbursed by the Fund in subsequent fiscal years if the Adviser so requests. This reimbursement may be requested if the aggregate amount actually paid by the Fund toward operating expenses for such fiscal year (taking into account the reimbursement) does not exceed the applicable limitation on the Fund's expenses. The Adviser is permitted to be reimbursed for management fee reductions and/or expense payments made in the prior three fiscal years. Any such reimbursement will be reviewed by the Board of Trustees. The Fund must pay its current ordinary operating expenses before the Adviser is entitled to any reimbursement of management fees and/or expenses. This operating expense limitation agreement can be terminated only by, or with the consent of, the Board of Trustees.

A discussion regarding the basis for the Board of Trustees' approval of the Advisory Agreement is available in the Fund's semi-annual report to shareholders dated May 31, 2009.

## **Portfolio Managers**

The Fund is managed by a team of portfolio managers (the "Portfolio Managers") who are responsible for the day-to-day management of the Fund as indicated below.

### *Avy E. Hirshman*

Avy Hirshman is a Managing Director and Chief Investment Officer of the Adviser. Mr. Hirshman is responsible for investment strategy, asset allocation and security selection. Mr. Hirshman earned a Bachelor of Science degree in International Finance from Northeastern University and was formerly a research analyst with Scudder, Stevens & Clark prior to joining the Adviser in 1993. In 2001, he was named Money Manager of the Year by *Emerging Markets Week*, an *Institutional Investor* publication. He has lived and traveled throughout the emerging markets and his comments appear regularly in *The Wall Street Journal*, *The New York Times*, *Barron's*, *BusinessWeek*, *Emerging Markets Week* and *Bloomberg Business News*.

### *James A. Trainor*

James Trainor is a Managing Director and Senior Portfolio Manager of the Adviser. Mr. Trainor is responsible for asset allocation, portfolio management and security selection. He joined the Adviser in 1994. Mr. Trainor holds a MBA in Finance from Columbia University, a Bachelor of Science degree in Mechanical Engineering from the University of Vermont and the Certified Investment Management Analyst ("CIMA") and Certified Investment Strategist ("CIS") designations from Investment Management Consultants Association ("IMCA"). He is an editor of the *Newgate Market Monitor*, and a frequent emerging markets lecturer for IMCA and Smith Barney's Consulting Group University. Mr. Trainor's reports have been published nationally in the *IMCA Monitor*, and his comments on international markets have appeared regularly in *The Wall Street Journal*, *The New York Times*, *Barron's*, *The Wall Street Transcript*, *World Equity* and *Bloomberg Business News*.

*Sonia G. Rosenbaum, Ph.D.*

Sonia Rosenbaum is a Managing Director and has been Director of Research since founding the firm in 1982. She is responsible for quantitative systems and research. In 1982, Dr. Rosenbaum founded the Adviser as one of the first purely quantitative investment research firms. She holds BS, MS and Ph.D. degrees from Purdue University and was a Professor at the University of Massachusetts. During Dr. Rosenbaum's distinguished academic career, she authored four books on statistical analysis and research methods, including *Quantitative Methods and Statistics*. Born in Latin America, Dr. Rosenbaum speaks five languages. As one of the earliest proponents of modern portfolio theory in the City of London, Dr. Rosenbaum pioneered the development of practical applications of quantitative analysis in international investing.

*Matthew E. Peterson*

Matthew Peterson is a Principal and Portfolio Manager of the Adviser. He is responsible for portfolio risk management and product development. Prior to joining the Adviser, Mr. Peterson was the Chief Investment Officer at Lydian Wealth Management from 1995 to 2005. Mr. Peterson holds a Master of Science in Industrial Administration with concentrations in Finance and Economics from Carnegie Mellon University and a Juris Doctor degree with specialized study in Corporate Securities, Banking and Tax law from the University of Pittsburgh School of Law. He was also awarded a cum laude Bachelor of Arts degree from the University of Connecticut. Mr. Peterson is a member of the Bar Association of the District of Columbia.

*David K. Lee*

David K. Lee is a Portfolio Manager and Investment Director of the Adviser. Mr. Lee is responsible for portfolio risk management, product development and portfolio customization. Mr. Lee holds a Bachelor of Science degree from the Wharton School of Finance, University of Pennsylvania and an MBA degree from the Anderson Graduate School of Management at UCLA. Prior to joining the Adviser in 2007, Mr. Lee was Portfolio Manager – Asia Equity as part of the Global Emerging Markets multi-strategy fund for the Rohatyn Group from 2003 to 2007 and Lead Portfolio Manager – Global Emerging Markets at Lazard Asset Management from 1994 to 2001. Mr. Lee is conversant in Korean.

*Maria Eugenia Tinedo*

Maria Eugenia Tinedo is a Principal, Portfolio Manager and Senior Research Analyst. Prior to joining the Adviser, Ms. Tinedo served as equity research analyst at Deutsche Bank from 1996 to 1999 and equity research analyst and portfolio manager of a Latin-focused fund at Citigroup Asset Management from 1999 to 2006. Ms. Tinedo holds a degree in Industrial Engineering from the Universidad Católica and a MBA from El Instituto de Estudios Superiores de Administración, both in Caracas, Venezuela. In addition, she earned a Masters in Economics and Finance from the University of Warwick in England. Born in Venezuela, Ms. Tinedo is a fluent Spanish speaker.

The SAI provides additional information about the Portfolio Managers' compensation, other accounts managed by the Portfolio Managers and their ownership of securities in the Fund.

## **Shareholder Information**

---

### **Choosing a Share Class**

The Fund offers Class A shares and Class I shares in this Prospectus. Each class of shares has its own expense structure. Purchases of Class A shares are subject to a sales charge (load) as described below. The Class I shares may be purchased without the imposition of any sales charges. Class I shares are offered primarily to institutions such as pension and profit sharing plans, employee benefit trusts, endowments, foundations, corporations and high net worth individuals. Class I shares may also be offered through certain financial intermediaries that charge their customers transaction or other distribution or service fees with respect to their customer's investments in the Fund. Pension and

profit sharing plans, employee trusts and employee benefit plan alliances and “wrap account” or “managed fund” programs established with broker-dealers or financial intermediaries that maintain an omnibus or pooled account for the Fund and do not require the Fund or the Adviser to pay a fee greater than 0.25% generally may purchase Class I shares, subject to investment minimums. You should always discuss the suitability of your investment with your broker-dealer or financial adviser.

**Sales Charge on Class A Shares.** If you purchase Class A shares of the Fund you will pay an initial sales charge of 5.25% when you invest, unless you qualify for a reduction or waiver of the sales charge. The sales charge for the Fund is calculated as follows<sup>(1)</sup>:

<b>When you invest this amount:</b>	<b>% of offering price</b>	<b>% of net amount invested</b>
\$0-\$24,999.99 <sup>(2)</sup>	5.25%	5.54%
\$25,000-\$49,999.99	4.50%	4.71%
\$50,000-\$99,999.99	3.50%	3.63%
\$100,000-\$249,999.99	2.50%	2.56%
\$250,000 or more <sup>(3)</sup>	0.00%	0.00%

<sup>(1)</sup>Class A shares are offered and sold at the next offering price, which is the sum of the net asset value (“NAV”) per share and the sales charge indicated above. Since the offering price is calculated to two decimal places using standard rounding criteria, the number of shares purchased and the dollar amount of the sales charge as a percentage of the offering price and of your net investment may be higher or lower depending on whether there was a downward or upward rounding.

<sup>(2)</sup>The minimum initial investment for Class A shares of the Fund is \$5,000 for non-IRA accounts and \$500 for IRA or other tax-deferred accounts.

<sup>(3)</sup>A finder’s fee of 0.50% will be paid directly by the Adviser to the dealer on accounts with an aggregate value of \$250,000 or more.

## **Class A Sales Charge Reductions and Waivers**

**Rights of Accumulation.** You may combine your current purchase of Class A shares of the Fund with other existing Class A shares currently owned for the purpose of qualifying for the lower initial sales charge rates that apply to larger purchases. The applicable sales charge for the new purchase is based on the total of your current purchase and the current NAV of all other Class A shares you own at the financial intermediary at which you are making the current purchase. You may not aggregate shares held at different financial intermediaries. If the current purchase is made directly through the Fund’s Transfer Agent, U.S. Bancorp Fund Services, LLC (the “Transfer Agent”), only those shares held directly at the Transfer Agent may apply toward the right of accumulation. You may aggregate shares that you own and that are currently owned by family members including spouses, minor children or parents residing at the same address. Shares held in the name of a nominee or custodian under pension, profit sharing or employee benefit plans may not be combined with other shares to qualify for the right of accumulation. You must notify the Transfer Agent or your financial intermediary at the time of purchase in order for the right of accumulation to apply. The Fund is not liable for any difference in purchase price if you fail to notify the Transfer Agent of your intent to exercise your right of accumulation and the Fund reserves the right to modify or terminate this right at any time.

**Reinstatement Privilege.** If you redeem Class A shares of the Fund, and within 60 days purchase and register new Class A shares, you will not pay a sales charge on the new purchase amount. The amount eligible for this privilege may not exceed the amount of your redemption proceeds. To exercise this privilege, contact your financial intermediary.

**Letter of Intent.** By signing a Letter of Intent (“LOI”), you can reduce your Class A sales charge. Your individual purchases will be made at the applicable sales charge based on the amount you intend to invest over a 13-month period. The LOI will apply to all purchases of Class A shares. Any Class A shares purchased within 90 days of the date you sign the letter of intent may be used as credit toward completion, but the reduced sales charge will only apply to new purchases made on or after that date. Purchases resulting from the reinvestment of distributions do not apply toward fulfillment of the LOI.

Shares equal to 5.25% of the amount of the LOI will be held in escrow during the 13-month period. If at the end of that time the total amount of purchases made is less than the amount intended, you will be required to pay the difference between the reduced sales charge and the sales charge applicable to the individual purchases had the LOI not been in effect. This amount will be obtained from redemption of the escrow shares. Any remaining escrow shares will be released to you.

**Investments of \$250,000 or More.** There is no initial sales charge on a lump sum Class A share purchase of \$250,000 or more, nor on any purchase into a Class A account with an accumulated value of \$250,000 or more. However, if you have taken advantage of this waiver and redeem your shares within 12 months of purchase, there is a level sales charge of 0.50% imposed on such shares. However, the level sales charge will not apply if you are otherwise entitled to a waiver of the initial sales charge as listed in “Sales Charge Waivers” below.

**Sales Charge Waivers.** Sales charges for Class A shares may be waived under certain circumstances for some investors or for certain purchases. You will not have to pay a sales charge on purchases of Class A shares if:

- you are an affiliate of the Adviser or any of its or the Fund’s officers, directors, trustees, employees or retirees;
- you are a registered representative of any broker-dealer authorized to sell Fund shares, subject to the internal policies and procedures of the broker-dealer;
- you are a member of the immediate families of any of the foregoing (i.e., parent, child, spouse, domestic partner, sibling, step or adopted relationships, grandparent, grandchild and UTMA accounts naming qualifying persons);
- you are a fee-based registered investment adviser, financial planner, bank trust department or registered broker-dealer and are purchasing shares on behalf of your customers;
- you are purchasing shares for retirement (not including IRA accounts) and deferred compensation plans and the trusts used to fund such plans (including, but not limited to, those defined in Sections 401(k), 403(b) and 457 of the Internal Revenue Code of 1986, as amended, and “rabbi trusts”), for which an affiliate of the Adviser acts as trustee or administrator;
- you are purchasing shares for a 401(k), 403(b) and 457 plans, and profit sharing and pension plans that invest \$1 million or more or have more than 100 participants;
- you are a current shareholder whose aggregate investment in Class A shares of the Fund exceeds \$250,000; and
- you are an individual on certain accounts under investment programs managed by the Adviser.

To receive a reduction in your Class A sales charge, you must let your financial institution or shareholder services representative know at the time you purchase shares that you qualify for such a reduction. You may be asked by your financial adviser or shareholder services representative to provide account statements or other information regarding your related accounts or related accounts of your immediate family in order to verify your eligibility for a reduced sales charge. Your investment professional or financial institution must notify the Fund if your share purchase is eligible for the sales load waiver. Sales charges will not be applied to shares purchased by reinvesting distributions.

If you would like information about sales charge waivers, call your financial representative or contact the Fund at 888-9-NEWGATE (888-963-9428). Information about the Fund’s Class A sales charges is available on the Fund’s website at [www.newgatefunds.com](http://www.newgatefunds.com).

## **Share Price**

The price of Fund shares is based on the Fund’s NAV per share. The NAV is calculated by dividing the value of the Fund’s total assets, less its liabilities, and by the number of its outstanding shares. In

calculating the NAV, portfolio securities are valued using current market values or official closing prices, if available. The NAV is calculated at the close of regular trading of the NYSE (generally 4:00 p.m., Eastern time). The NAV will not be calculated on days that the NYSE is closed for trading.

Each security owned by the Fund that is listed on a securities exchange is valued at its last sale price on that exchange on the date as of which assets are valued. Where the security is listed on more than one exchange, the Fund will use the price on the exchange that the Fund generally considers to be the principal exchange on which the stock is traded. Portfolio securities listed on the NASDAQ Stock Market, Inc. (“NASDAQ”) will be valued at the NASDAQ Official Closing Price, which may not necessarily represent the last sale price. If there has been no sale on such exchange or on NASDAQ on such day, the security is valued at the mean between the most recent bid and asked prices on such day. When market quotations are not readily available, a security or other asset is valued at its fair value as determined under procedures approved by the Board of Trustees. These fair value procedures will also be used to price a security when corporate events, events in the securities market and/or world events cause the Adviser to believe that a security’s last sale price may not reflect its actual market value. The intended effect of using fair value pricing procedures is to ensure that the Fund is accurately priced. The Board of Trustees will regularly evaluate whether the Fund’s fair value pricing procedures continue to be appropriate in light of the specific circumstances of the Fund and the quality of prices obtained through their application by the Trust’s valuation committee.

When fair value pricing is employed, the prices of securities used by the Fund to calculate its NAV may differ from quoted or published prices for the same securities. Due to the subjective and variable nature of fair value pricing, it is possible that the fair value determined for a particular security may be materially different (higher or lower) from the price of the security quoted or published by others or the value when trading resumes or realized upon its sale. Therefore, if a shareholder purchases or redeems Fund shares when it holds securities priced at a fair value, the number of shares purchased or redeemed may be higher or lower than would be if the Fund were using market value pricing.

In the case of foreign securities, the occurrence of certain events after the close of foreign markets, but prior to the time the Fund’s NAV is calculated (such as a significant surge or decline in the U.S. or other markets) often will result in an adjustment to the trading prices of foreign securities when foreign markets open on the following business day. If such events occur, the Fund will value foreign securities at fair value, taking into account such events, in calculating the NAV. In such cases, use of fair valuation can reduce an investor’s ability to seek to profit by estimating the Fund’s NAV in advance of the time the NAV is calculated. The Adviser anticipates that the Fund’s portfolio holdings will be fair valued only if market quotations for those holdings are considered unreliable.

Investors may be charged a fee if they effect transactions through a financial institution. The Fund has authorized one or more financial intermediaries (each an “Authorized Intermediary”) to receive on its behalf purchase and redemption orders. Authorized Intermediaries are authorized to designate other intermediaries to receive purchase and redemption orders on the Fund’s behalf. The Fund will be deemed to have received a purchase or redemption order when an Authorized Intermediary or, if applicable, its authorized designee, receives the order. Customer orders will be priced based on the Fund’s NAV next computed after they are received by an Authorized Intermediary or its authorized designee.

## **How to Purchase Shares**

Shares of the Fund are purchased at the next NAV per share calculated after your purchase order is received by the Fund (plus any applicable sales charge for Class A shares). The minimum initial investment for Class A shares is \$5,000 for non-IRA accounts and \$500 for IRA and other tax-deferred accounts. The minimum initial investment for all types of Class I shares is \$100,000. The minimum subsequent investment for Class A and Class I shares is \$1,000 for non-IRA accounts and \$100 for IRA and other tax-deferred accounts. The Fund may, but is not required to, accept investments in amounts below the minimum investment amounts from investors who are related

to, or affiliated with, the Fund or the Adviser. Shareholders will be given at least 30 days' notice of any increase in the minimum dollar amount of initial or subsequent investments. The Adviser may waive the minimum investment amount for any shareholder at its discretion.

If you place an order for Fund shares through a financial institution in accordance with such financial institution's procedures, and such financial institution then transmits your order to the Transfer Agent in accordance with the Transfer Agent's instructions, your purchase will be processed at the applicable price next calculated after the Transfer Agent receives your order. The financial institution must promise to send to the Transfer Agent immediately available funds in the amount of the purchase price in accordance with the Transfer Agent's procedures. If payment is not received within the time specified, the Transfer Agent may rescind the transaction and the financial institution will be held liable for any resulting fees or losses. In the case of certain Authorized Intermediaries that have made satisfactory payment or redemption arrangements with the Fund, orders will be processed at the applicable price next calculated after receipt by the Authorized Intermediary, consistent with applicable laws and regulations. Financial institutions, including Authorized Intermediaries, may set cut-off times for the receipt of orders that are earlier than the cut-off times established by the Fund. For more information about your financial institution's rules and procedures and whether your financial institution is an Authorized Intermediary, you should contact your financial institution directly.

Each account application ("Account Application") to purchase Fund shares is subject to acceptance by the Fund and is not binding until so accepted. The Fund reserves the right to reject any purchase order if, in its discretion, it is in the Fund's best interest to do so. For example, a purchase order may be refused if it appears so large that it would disrupt the management of the Fund. Purchases may also be rejected from persons believed to be "market timers," as described under the section entitled "Tools to Combat Frequent Transactions," below. In addition, a service fee which is currently \$25, as well as any loss sustained by the Fund, will be deducted from a shareholder's account for any purchases that do not clear. The Fund and the Transfer Agent will not be responsible for any losses, liability, cost or expense resulting from rejecting any purchase order. Your order will not be accepted until the completed Account Application is received by the Fund or the Transfer Agent.

### **Purchase Requests Must be Received in Good Order**

Your share price will be based on the next NAV per share calculated, plus any applicable sales charge, after the Transfer Agent or your Authorized Intermediary receives your purchase request in good order. "Good order" means that your purchase request includes:

- the name of the Fund and class of Fund shares;
- the dollar amount of shares to be purchased;
- your account application or investment stub; and
- a check payable to "Newgate Global Resources Fund".

All purchase requests received in good order before the close of the NYSE (generally 4:00 p.m., Eastern time), will be processed on that same day. Purchase requests received after the close of the NYSE (generally 4:00 p.m., Eastern time), will be priced on the next business day.

Shares of the Fund have not been registered for sale outside of the U.S. The Fund generally does not sell shares to investors residing outside the U.S., even if they are U.S. citizens or lawful permanent residents, except to investors with U.S. military APO or FPO addresses.

*Purchase by Mail.* To purchase the Fund's shares by mail, simply complete and sign the Account Application and mail it, along with a check made payable to the Fund to:

**Regular Mail**

Newgate Global Resources Fund  
c/o U.S. Bancorp Fund Services, LLC  
P.O. Box 701  
Milwaukee, WI 53201-0701

**Overnight or Express Mail**

Newgate Global Resources Fund  
c/o U.S. Bancorp Fund Services, LLC  
615 East Michigan Street, 3rd Floor  
Milwaukee, WI 53202

The Fund and the Transfer Agent do not consider the U.S. Postal Service or other independent delivery services to be their agents. All purchases by check must be in U.S. dollars drawn on a domestic financial institution. The Fund will not accept payment in cash or money orders. The Fund also does not accept cashier's checks in amounts of less than \$10,000. To prevent check fraud, the Fund will not accept third party checks, Treasury checks, credit card checks, traveler's checks or starter checks for the purchase of shares. The Fund is unable to accept post-dated checks, post-dated online bill pay checks, or any conditional order or payment.

*Purchase by Wire.* If you are making your first investment in the Fund by wire, the Transfer Agent must have received a completed Account Application. You can mail or use an overnight service to deliver your Account Application to the Transfer Agent at the above address. Upon receipt of your completed Account Application, the Transfer Agent will establish an account for you. Once your account has been established, you may instruct your bank to send the wire. Prior to sending the wire, please call the Transfer Agent at 888-9-NEWGATE (888-963-9428) to advise them of the wire and to ensure proper credit upon receipt. Your bank must include the name of the Fund, your name and account number so the wire can be correctly applied. Your bank should immediately transmit available funds by wire to:

Wire to:	U.S. Bank N.A.
ABA Number:	075000022
Credit:	U.S. Bancorp Fund Services, LLC
Account:	112-952-137
Further Credit:	Newgate Global Resources Fund (Shareholder Name/Account Registration) (Shareholder Account Number)

Wired funds must be received prior to the close of the NYSE (generally 4:00 p.m., Eastern time) to be eligible for same day pricing. The Fund and U.S. Bank, N.A., the Fund's custodian, are not responsible for the consequences of delays from the banking or Federal Reserve wire system, or from incomplete wiring instructions.

*Investing by Telephone.* If you have completed the "Telephone Purchase Authorization" section of the Account Application, you may purchase additional shares by telephoning the Fund toll free at 888-9-NEWGATE (888-963-9428). This option allows investors to move money from their bank account to their Fund account upon request. Only bank accounts held at domestic institutions that are Automated Clearing House ("ACH") members may be used for telephone transactions. The minimum telephone purchase amount is \$1,000 (\$100 for IRAs or other tax-deferred accounts). If your order is received prior to close of the NYSE (generally 4:00 p.m., Eastern time), shares will be purchased in your account at the applicable price determined on the day your order is placed.

*Subsequent Investments.* The minimum subsequent investment for all non-IRA accounts is \$1,000 and for IRA and other tax-deferred accounts is \$100. Shareholders will be given at least 30 days' notice of any increase in the minimum dollar amount of subsequent investments. You may add to your account at any time by purchasing shares by mail, by telephone or by wire. You must call to notify the Fund at

888-9-NEWGATE (888-963-9428) before wiring. A remittance form, which is attached to your individual account statement, should accompany any investments made through the mail. All purchase requests must include your Fund shareholder account number.

*Automatic Investment Plan.* For your convenience, the Fund offers an Automatic Investment Plan (“AIP”). Under the AIP and after your initial investment in either class, you may authorize the Fund to withdraw automatically from your personal checking or savings account an amount which must be at least \$1,000 (or \$100 for IRAs or other tax-deferred accounts), on a monthly basis. In order to participate in the AIP, your bank must be a member of the ACH network. If you wish to enroll in the AIP, complete the appropriate section in the Account Application. The Fund may terminate or modify this privilege at any time. You may terminate your participation in the AIP at any time by notifying the Transfer Agent five days prior to the effective date of the request. A fee (currently \$25) will be charged if your bank does not honor the AIP draft for any reason.

*Anti-Money Laundering Program.* Please note that the Fund has established an Anti-Money Laundering Compliance Program (the “Program”) as required by the Uniting and Strengthening America by Providing Appropriate Tools Required to Intercept and Obstruct Terrorism Act of 2001 (“USA PATRIOT Act”) and related anti-money laundering laws and regulations. In order to ensure compliance with this law, the Account Application asks for, among other things, the following information for all “customers” seeking to open an “account” (as those terms are defined in rules adopted pursuant to the USA PATRIOT Act):

- full name;
- date of birth (individuals only);
- Social Security or taxpayer identification number; and
- permanent street address (P.O. Box only is not acceptable).

Accounts opened by entities, such as corporations, limited liability companies, partnerships or trusts will require additional documentation.

Please note that if any information listed above is missing, your Account Application will be returned and your account will not be opened. In compliance with the USA PATRIOT Act and other applicable anti-money laundering laws and regulations, the Transfer Agent will verify the information on your application as part of the Program. The Fund reserves the right to request additional clarifying information and may close your account if such clarifying information is not received by the Fund within a reasonable time of the request or if the Fund cannot form a reasonable belief as to the true identity of a customer. If you require additional assistance when completing your application, please contact the Transfer Agent at 888-9-NEWGATE (888-963-9428).

## **How to Redeem Shares**

In general, orders to sell or “redeem” shares may be placed either directly with the Fund or through a Authorized Intermediary. However, if you originally purchased your shares through a Authorized Intermediary, your redemption order must be placed with the same institution that placed the original purchase order in accordance with the procedures established by that institution. Your Authorized Intermediary is responsible for sending your order to the Transfer Agent and for crediting your account with the proceeds. You may redeem part or all of your Fund shares on any business day that the Fund calculates its NAV. To redeem shares with the Fund, you must contact the Fund either by mail or by phone to place a redemption order. You should request your redemption prior to the close of the NYSE (generally 4:00 p.m., Eastern time) to obtain that day’s closing NAV. Redemption requests received after the close of the NYSE will be treated as though received on the next business day.

Shareholders who have an IRA or other retirement plan must indicate on their redemption request whether or not to withhold federal income tax. Redemption requests failing to indicate an election not to have tax withheld will generally be subject to 10% withholding. IRA accounts may not be redeemed by telephone.

*Payment of Redemption Proceeds.* You may redeem your Fund shares at a price equal to the NAV next determined after the Transfer Agent receives your redemption request in good order (less any applicable redemption fee). Your redemption request cannot be processed on days the NYSE is closed. Redemption proceeds with respect to all requests received in good order by the Fund before the close of the regular trading session of the NYSE (generally 4:00 p.m., Eastern time) will usually be sent on the next business day.

A redemption request will be deemed in “good order” if it includes:

- the shareholder’s name;
- the name of the Fund;
- the account number;
- the share or dollar amount to be redeemed; and
- signatures of all shareholders on the account and a signature guarantee(s), if applicable.

You may have a check sent to the address of record, wired to your pre-established bank account or sent via electronic funds transfer through the ACH network using the bank instructions previously established on your account. Redemption proceeds will typically be sent on the business day following your redemption. Please note that wires are subject to a \$15 wire fee and are typically sent on the next business day after the redemption was processed. There is no charge to have proceeds sent via ACH, however, funds are typically credited to your bank within two to three days after redemption. In all cases, proceeds will be processed within seven calendar days after the Fund receives your redemption request.

Before selling recently purchased shares and if the Transfer Agent has not yet collected payment for the shares you are selling, it may delay sending the proceeds until the payment is collected. This may take up to 12 calendar days from the purchase date. Furthermore, there are certain times when you may be unable to sell Fund shares or receive proceeds. Specifically, the Fund may suspend the right to redeem shares or postpone the date of payment upon redemption for more than seven calendar days for the following reasons: (1) for any period during which the NYSE is closed (other than customary weekend or holiday closings) or trading on the NYSE is restricted; (2) for any period during which an emergency exists as a result of which disposal by the Fund of securities owned by it is not reasonably practicable or it is not reasonably practicable for the Fund to fairly determine the value of its net assets; or (3) for such other periods as the SEC may permit for the protection of shareholders.

The Transfer Agent may require a signature guarantee for certain redemption requests. A signature guarantee assures that your signature is genuine and protects you from unauthorized account redemptions. Signature guarantees can be obtained from banks and securities dealers, *but not from a notary public*. A signature guarantee of each owner is required in the following situations:

- if ownership is changed on your account;
- when redemption proceeds are payable or sent to any person, address or bank account not on record;
- written requests to wire redemption proceeds (if not previously authorized on the account);
- if a change of address request has been received by the Transfer Agent within the last 15 days; and
- for all redemptions in excess of \$100,000 from any shareholder account.

In addition to the situations described above, the Fund and the Transfer Agent reserve the right to require a signature guarantee or other acceptable signature verification in other instances based on the

circumstances relative to the particular situation. Non-financial transactions including establishing or modifying certain services on an account may require a signature verification from a Signature Verification Program member or other acceptable form of authentication from a financial institution source.

*Wire Redemption.* Wire transfers may be arranged to redeem shares. The Transfer Agent charges a fee, currently \$15, per wire which will be deducted from your proceeds on a complete or share-specific trade. The fee will be deducted from your remaining account balance on dollar specific redemptions.

*Redemption by Mail.* You can execute most redemptions by furnishing an unconditional written request to the Fund to redeem your shares at the current NAV per share. Redemption requests in writing should be sent to the Transfer Agent at:

**Regular Mail**

Newgate Global Resources Fund  
c/o U.S. Bancorp Fund Services, LLC  
P.O. Box 701  
Milwaukee, WI 53201-0701

**Overnight or Express Mail**

Newgate Global Resources Fund  
c/o U.S. Bancorp Fund Services, LLC  
615 East Michigan Street, 3rd Floor  
Milwaukee, WI 53202

*Telephone Redemption.* If you have been authorized to perform telephone transactions (either by completing the required portion of your Account Application or by subsequent arrangement in writing with the Fund), you may redeem shares, \$100,000 or less, by instructing the Fund by phone at 888-9-NEWGATE (888-963-9428). A signature authentication from a Signature Verification Program member or other acceptable financial institution source will be required of all shareholders in order to qualify for or to change telephone redemption privileges on an existing account. Telephone redemptions cannot be made if you notify the Transfer Agent of a change of address within 15 days before the redemption request. If you have a retirement account, you may not redeem shares by telephone. Once a telephone transaction has been placed, it cannot be cancelled or modified.

*Note:* Neither the Fund nor any of its service providers will be liable for any loss or expense in acting upon instructions that are reasonably believed to be genuine. To confirm that all telephone instructions are genuine, the Fund will use reasonable procedures, such as requesting:

- that you correctly state your Fund account number;
- the name in which your account is registered; or
- the Social Security or taxpayer identification number under which the account is registered.

*Systematic Withdrawal Plan.* The Fund offers a systematic withdrawal plan (the “SWP”) whereby shareholders or their representatives may request a redemption in a specific dollar amount be sent to them monthly, quarterly or annually. Investors may choose to have a check sent to the address of record, or proceeds may be sent to a pre-designated bank account via the ACH network. To start the SWP, your account must have Fund shares with a value of at least \$10,000, and the minimum amount that may be withdrawn each month or quarter is \$100. The SWP may be terminated or modified by the Fund at any time. Any request to change or terminate your SWP should be communicated in writing or by telephone to the Transfer Agent no later than five days before the next scheduled withdrawal. A withdrawal under the SWP involves a redemption of Fund shares, and may result in a gain or loss for federal income tax purposes. In addition, if the amount withdrawn exceeds the distributions credited to your account, the account ultimately may be depleted. To establish the SWP, complete the SWP section of the Account Application. Please call 888-9-NEWGATE (888-963-9428) for additional information regarding the SWP.

*The Fund’s Right to Redeem an Account.* The Fund reserves the right to redeem the shares of any shareholder whose account balance is less than \$1,000, other than as a result of a decline in the NAV

or for market reasons. The Fund will provide shareholders with written notice 30 days prior to redeeming the shareholder's account.

*Redemption-in-Kind.* The Fund generally pays redemption proceeds in cash. However, under unusual conditions that make the payment of cash unwise (and for the protection of the Fund's remaining shareholders), the Fund may pay all or part of a shareholder's redemption proceeds in liquid securities with a market value equal to the redemption price (redemption-in-kind).

Specifically, if the amount you are redeeming during any 90-day period is in excess of the lesser of \$250,000 or 1% of the NAV of the Fund, valued at the beginning of such period, the Fund has the right to redeem your shares by giving you the amount that exceeds \$250,000 or 1% of the NAV of the Fund in securities instead of cash. If the Fund pays your redemption proceeds by a distribution of securities, you could incur brokerage or other charges in converting the securities to cash, and will bear any market risks associated with such securities until they are converted into cash.

### **Tools to Combat Frequent Transactions**

The Fund is intended for long-term investors. Short-term "market-timers" who engage in frequent purchases and redemptions can disrupt the Fund's investment program and create additional transaction costs that are borne by all of the Fund's shareholders. The Board of Trustees has adopted policies and procedures that are designed to discourage excessive, short-term trading and other abusive trading practices that may disrupt portfolio management strategies and harm performance. The Fund takes steps to reduce the frequency and effect of these activities in the Fund. These steps may include, among other things, monitoring trading activity and using fair value pricing procedures, as determined by the Board of Trustees, when the Adviser determines current market prices are not readily available. Although these efforts are designed to discourage abusive trading practices, these tools cannot eliminate the possibility that such activity will occur. The Fund seeks to exercise its judgment in implementing these tools to the best of its abilities in a manner that it believes is consistent with shareholder interests. Except as noted herein, the Fund applies all restrictions uniformly in all applicable cases.

The Fund uses a variety of techniques to monitor for and detect abusive trading practices. These techniques may change from time to time as determined by the Fund in its sole discretion. To minimize harm to the Fund and its shareholders, the Fund reserves the right to reject any purchase order (but not a redemption request) in whole or in part, for any reason (including, without limitation, purchases by persons whose trading activity in Fund shares is believed by the Adviser to be harmful to the Fund) and without prior notice. The Fund may decide to restrict purchase and sale activity in its shares based on various factors, including whether frequent purchase and sale activity will disrupt portfolio management strategies and adversely affect Fund performance.

Due to the complexity and subjectivity involved in identifying abusive trading activity and the volume of shareholder transactions the Fund handles, there can be no assurance that the Fund's efforts will identify all trades or trading practices that may be considered abusive. In particular, since the Fund receives purchase and sale orders through financial intermediaries that use group or omnibus accounts, the Fund cannot always detect frequent trading. However, the Fund will work with financial institutions as necessary to discourage shareholders from engaging in abusive trading practices and to impose restrictions on excessive trades. In this regard, the Fund has entered into information sharing agreements with financial intermediaries pursuant to which these intermediaries are required to provide to the Fund, at the Fund's request, certain information relating to its customers investing in the Fund through non-disclosed or omnibus accounts. The Fund will use this information to attempt to identify abusive trading practices. Financial intermediaries are contractually required to follow any instructions from the Fund to restrict or prohibit future purchases from shareholders that are found to have engaged in abusive trading in violation of the Fund's policies. However, the Fund cannot guarantee the accuracy of the information provided to it from financial intermediaries and cannot ensure that it will always be able to detect abusive trading practices that occur through non-disclosed

and omnibus accounts. As a result, the Fund's ability to monitor and discourage abusive trading practices in non-disclosed and omnibus accounts may be limited.

## **Other Fund Policies**

If you elect telephone privileges on the account application or in a letter to the Fund, you may be responsible for any fraudulent telephone orders as long as the Fund has taken reasonable precautions to verify your identity. In addition, once you place a telephone transaction request, it cannot be canceled or modified.

During periods of significant economic or market change, telephone transactions may be difficult to complete. If you are unable to contact the Fund by telephone, you may also mail your requests to the Fund at the address listed under the section entitled "How to Purchase Shares," above.

Telephone trades must be received by or prior to market close. During periods of high market activity, shareholders may encounter higher than usual call waiting times. Please allow sufficient time to ensure that you will be able to complete your telephone transaction prior to the close of the NYSE (generally 4:00 p.m., Eastern time).

Your broker-dealer or other financial institution may establish policies that differ from those of the Fund. For example, the institution may charge transaction fees, set higher minimum investments or impose certain limitations on buying or selling shares in addition to those identified in this Prospectus. Contact your broker-dealer or other financial institution for details. Shares of the Fund have not been registered for sale outside of the U.S.

*Householding.* In an effort to decrease costs, the Fund intends to reduce the number of duplicate prospectuses and annual and semi-annual reports you receive by sending only one copy of each to those addresses shared by two or more accounts and to shareholders the Fund reasonably believes are from the same family or household. If you would like to discontinue householding for your accounts, please call toll-free at 888-9-NEWGATE (888-963-9428) to request individual copies of these documents. Once the Fund receives notice to stop householding, the Fund will begin sending individual copies 30 days after receiving your request. This policy does not apply to account statements.

## **Distribution (12b-1) and Shareholder Servicing Fees**

The Fund has adopted a Distribution Plan (the "Plan") pursuant to Rule 12b-1 under the 1940 Act. Under the Plan, the Fund is authorized to pay the Fund's distributor a fee for the sale and distribution of the Fund's Class A shares (the "12b-1 Fee"). The maximum amount of the 12b-1 Fee authorized is 0.25% of the Fund's average daily net assets attributable to Class A shares annually. Additionally, under the Plan the Adviser may perform, or arrange for others to perform, certain shareholder functions. For these shareholder services, the Adviser and/or shareholder servicing agents are entitled to receive an annual shareholder servicing fee in the amount of 0.10% of the average daily net assets attributable to Class A shares of the Fund. The Adviser may pay additional compensation from time to time, out of its assets and not as an additional charge to the Fund, to selected shareholder servicing agents and other persons in connection with providing services to the shareholders of the Fund. Because these fees are paid out of the Fund's assets on an on-going basis, over time these fees will increase the cost of your investment in Fund shares and may cost you more than paying other types of sales charges. Class I shares of the Fund are not subject to the 12b-1 fee or any shareholder servicing fees.

In addition, the Fund may pay service fees to intermediaries such as banks, broker-dealers, financial advisers or other financial institutions, including affiliates of the Adviser, for sub-administration, sub-transfer agency and other shareholder services associated with shareholders whose shares are held of record in omnibus, other group accounts or accounts traded through registered securities clearing agents.

The Adviser, out of its own resources, and without additional cost to the Fund or its shareholders, may provide additional cash payments or non-cash compensation to intermediaries who sell shares of the Fund. Such payments and compensation are in addition to service fees paid by the Fund, if any. These additional cash payments are generally made to intermediaries who provide shareholder servicing, marketing support and/or access to sales meetings, sales representatives and management representatives of the intermediary. Cash compensation may also be paid to intermediaries for inclusion of the Fund on a sales list, including a preferred or select sales list, in other sales programs or as an expense reimbursement in cases where the intermediary provides shareholder services to the Fund's shareholders. The Adviser may also pay cash compensation in the form of finder's fees that vary depending on the dollar amount of the shares sold.

## **Distributions and Taxes**

---

### **Distributions**

The Fund will make distributions of net investment income and net capital gains, if any, at least annually, typically within the month of December. The Fund may make additional distributions if it deems it desirable at another time during any year.

All distributions will be reinvested in Fund shares unless you choose one of the following options: (1) receive distributions of net capital gains in cash, while reinvesting net investment income distributions in additional Fund shares; (2) receive all distributions in cash; or (3) reinvest net capital gain distributions in additional fund shares, while receiving distributions of net investment income in cash.

If you wish to change your distribution option, write to the Transfer Agent in advance of the payment date of the distribution. However, any such change will be effective only as to distributions for which the record date is five or more business days after the Transfer Agent receives the written request.

If you elect to receive distributions in cash and the U.S. Postal Service cannot deliver your check, or if a check remains uncashed for six months, the Fund reserves the right to reinvest the distribution check in your account at the Fund's then current NAV and to reinvest all subsequent distributions.

### **Tax Consequences**

Distributions of the Fund's net investment income (which includes, but is not limited to, interest, dividends and net short-term capital gains), if any, are generally taxable to the Fund's shareholders as ordinary income. To the extent that the Fund's distributions of net investment income are designated as attributable to "qualified dividend" income, such income may be subject to tax at the reduced rate of federal income tax applicable to non-corporate shareholders for net long-term capital gains, if certain holding period requirements have been satisfied by the Fund and the shareholder. To the extent the Fund's distributions of net investment income are attributable to net short-term capital gains, such distributions will be treated as ordinary dividend income for the purposes of income tax reporting and will not be available to offset a shareholder's capital losses from other investments.

Distributions of net capital gains (net long-term capital gains less net short-term capital losses) are generally taxable as long-term capital gains (currently at a maximum rate of 15%) regardless of the length of time a shareholder has owned Fund shares.

You will be taxed in the same manner whether you receive your distributions (whether of net investment income or net capital gains) in cash or reinvest them in additional Fund shares.

Shareholders who sell, exchange or redeem shares generally will have a capital gain or loss from the sale, exchange or redemption. The amount of the gain or loss and the applicable rate of federal

income tax will depend generally upon the amount paid for the shares, the amount received from the sale or redemption and how long the shares were held by a shareholder. If you purchase Fund shares within 30 days before or after redeeming other Fund shares at a loss, all or part of your loss will not be deductible and will instead increase the basis of the newly purchased shares.

Shareholders will be advised annually as to the federal tax status of all distributions made by the Fund for the preceding year. Distributions by the Fund may also be subject to state and local taxes. Additional tax information may be found in the SAI.

This section is not intended to be a full discussion of federal tax laws and the effect of such laws on you. There may be other federal, state, foreign or local tax considerations applicable to a particular investor. You are urged to consult your own tax adviser.

## Financial Highlights

The following financial highlights table shows the Fund's financial performance information for the Fund's Class A and Class I shares from December 31, 2008 (its commencement of operations) to the period ended November 30, 2009. Certain information reflects financial results for a single share of the Fund. The total return in the table represents the rate that you would have earned or lost on an investment in the Fund (assuming you reinvested all distributions). This information has been audited by Deloitte & Touche LLP, the independent registered public accounting firm of the Fund, whose report, along with the Fund's financial statements, is included in the Fund's Annual Report to Shareholders, which is available upon request.

### Class A Shares

Per Share Data for a Share Outstanding Throughout the Period

	Period Ended November 30, 2009 <sup>(1)</sup>
<b>Net asset value, beginning of period</b>	<b><u>\$20.00</u></b>
<b>Income from investment operations:</b>	
Net investment income <sup>(2)</sup>	0.01
Net realized and unrealized gain	<u>10.51</u>
Total from investment operations	<b><u>10.52</u></b>
<b>Net asset value, end of period</b>	<b><u>\$30.52</u></b>
<b>Total return</b> <sup>(3) (4)</sup>	<b><u>52.60%</u></b>
<b>Ratios/supplemental data:</b>	
Net assets, end of period (000's)	\$784
Ratio of expenses to average net assets:	
Before waiver and expense reimbursements <sup>(5)</sup>	60.42%
After waiver and expense reimbursements <sup>(5)</sup>	1.75%
Ratio of net investment income (loss) to average net assets:	
Before waiver and expense reimbursements <sup>(5)</sup>	(58.64)%
After waiver and expense reimbursements <sup>(5)</sup>	0.03%
Portfolio turnover rate <sup>(3)</sup>	129.50%

<sup>(1)</sup> The Fund commenced operations on December 31, 2008.

<sup>(2)</sup> Per share net investment income was calculated using average shares outstanding method.

<sup>(3)</sup> Not annualized for periods less than one year.

<sup>(4)</sup> Excludes the effect of 5.25% front end sales load.

<sup>(5)</sup> Annualized.

**Class I Shares**

Per Share Data for a Share Outstanding Throughout the Period

	Period Ended November 30, 2009 <sup>(1)</sup>
<b>Net asset value, beginning of period</b>	<b><u>\$20.00</u></b>
<b>Income from investment operations:</b>	
Net investment income <sup>(2)</sup>	0.06
Net realized and unrealized gain	<u>10.56</u>
Total from investment operations	<b><u>10.62</u></b>
<b>Net asset value, end of period</b>	<b><u>\$30.62</u></b>
<b>Total return</b> <sup>(3)</sup>	<b><u>53.05%</u></b>
<b>Ratios/supplemental data:</b>	
Net assets, end of period (000's)	\$153
Ratio of expenses to average net assets:	
Before waiver and expense reimbursements <sup>(4)</sup>	79.02%
After waiver and expense reimbursements <sup>(4)</sup>	1.40%
Ratio of net investment income (loss) to average net assets:	
Before waiver and expense reimbursements <sup>(4)</sup>	(77.35)%
After waiver and expense reimbursements <sup>(4)</sup>	0.27%
Portfolio turnover rate <sup>(3)</sup>	129.50%

<sup>(1)</sup> The Fund commenced operations on December 31, 2008.

<sup>(2)</sup> Per share net investment income was calculated using average shares outstanding method.

<sup>(3)</sup> Not annualized for periods less than one year.

<sup>(4)</sup> Annualized.

# PRIVACY NOTICE

---

The Fund collects non-public personal information about you from the following sources:

- information we receive about you on applications or other forms;
- information you give us orally; and/or
- information about your transactions with us or others.

**We do not disclose any non-public personal information about our shareholders or former shareholders without the shareholder's authorization, except as permitted by law or in response to inquiries from governmental authorities. We may share information with affiliated parties and unaffiliated third parties with whom we have contracts for servicing the Fund. We will provide unaffiliated third parties with only the information necessary to carry out their assigned responsibility. All shareholder records will be disposed of in accordance with applicable law. We maintain physical, electronic and procedural safeguards to protect your non-public personal information and require third parties to treat your non-public personal information with the same high degree of confidentiality.**

**In the event that you hold shares of the Fund through a financial intermediary, including, but not limited to, a broker-dealer, bank or trust company, the privacy policy of your financial intermediary would govern how your non-public personal information would be shared with unaffiliated third parties.**

***Investment Adviser***

Newgate Capital Management LLC  
One Sound Shore Drive  
Greenwich, Connecticut 06830

***Independent Registered Public Accounting Firm***

Deloitte & Touche LLP  
555 East Wells Street  
Milwaukee, Wisconsin 53202

***Legal Counsel***

Godfrey & Kahn, S.C.  
780 North Water Street  
Milwaukee, Wisconsin 53202

***Custodian***

U.S. Bank, National Association  
Custody Operations  
1555 North River Center Drive, Suite 302  
Milwaukee, Wisconsin 53212

***Transfer Agent, Fund Accountant and Fund Administrator***

U.S. Bancorp Fund Services, LLC  
615 East Michigan Street  
Milwaukee, Wisconsin 53202

***Distributor***

Quasar Distributors, LLC  
615 East Michigan Street  
Milwaukee, Wisconsin 53202

## **Newgate Global Resources Fund**

a series of Trust for Professional Managers

### **FOR MORE INFORMATION**

You can find more information about the Fund in the following documents:

#### **Statement of Additional Information**

The Fund's SAI provides additional details about the investments and techniques of the Fund and certain other additional information. A current SAI is on file with the SEC and is incorporated into this Prospectus by reference. This means that the SAI is legally considered a part of this Prospectus even though it is not physically within this Prospectus.

#### **Annual and Semi-Annual Reports**

The Fund's annual and semi-annual reports provide the most recent financial reports and portfolio listings. The annual report contains a discussion of the market conditions and investment strategies that affected the Fund's performance during the Fund's last fiscal year.

You can obtain a free copy of these documents, request other information or make general inquiries about the Fund by calling the Fund (toll-free) at 888-9-NEWGATE (888-963-9428), by visiting the Fund's website at [www.newgatefunds.com](http://www.newgatefunds.com) or by writing to:

#### **Newgate Global Resources Fund**

c/o U.S. Bancorp Fund Services, LLC

P.O. Box 701

Milwaukee, WI 53201-0701

You can review and copy information, including the Fund's shareholder reports and SAI, at the SEC's Public Reference Room in Washington, D.C. You can obtain information on the operation of the Public Reference Room by calling (202) 551-8090. Reports and other information about the Fund are also available:

- free of charge from the SEC's EDGAR database on the SEC's Internet website at <http://www.sec.gov>;
- for a fee, by writing to the SEC's Public Reference Room, 100 F Street, N.E., Washington, D.C. 20549-0213; or
- for a fee, by electronic request at the following e-mail address: [publicinfo@sec.gov](mailto:publicinfo@sec.gov).

---

(The Trust's SEC Investment Company Act file number is 811-10401)